

THE INVITATION

BUKI 木 BAYU

PRIVATE ESTATES

**LIVING  
DEFINED BY  
NATURE.**



*Who is the host and  
who is the guest?*

**WE ARE BUT  
GUESTS UPON  
THE LAND.**

We don't own the forest, but we owe it for every breath we take. It asks for nothing in return, except that we leave it to continue its work to nurture, refresh, rebuild and renew life.

# DRAGONFLY LAKE

*Dragonflies, butterflies and fireflies are just some of your neighbours by the lake.*

## AN EXTENSION OF THE FOREST BEYOND.

Fall in love at first sight with Bukit Bayu. The experience begins just beyond the entry gate, where a lake surrounded by local trees has been landscaped to reflect the surrounding forest reserve.

Every day is filled with amazement as you discover that new herbs have sprouted, flowers have bloomed and trees have grown a little taller.



VIEWING DECK WITH GREEN ROOF  
*Yoga Pavilion*

THE FINS  
*Clubhouse*

FEATURE STONE STAIRWAY

ELEVATED WALKWAY

JOGGING PATH

PICNIC SPOTS

FERN GARDEN & HIDDEN TRACKS  
*For children's adventures*

DRAGONFLY LAKE

TIMBER PLATFORM BRIDGE

# 926

trees planted by the lake

# 70%

are indigenous trees

# 10,143

sq.ft. of ecological wetland & park

*Pocket hideaways to connect with people and nature.*

Undulating terraces make for perfect picnic spots with friends and family.

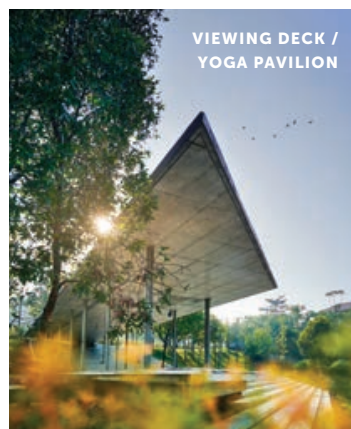
Paved walkways that meander around the lake are great for jogging, or walking with the kids on a discovery trail of the flora, fauna, birds, butterflies and dragonflies that have taken up residence in Bukit Bayu.



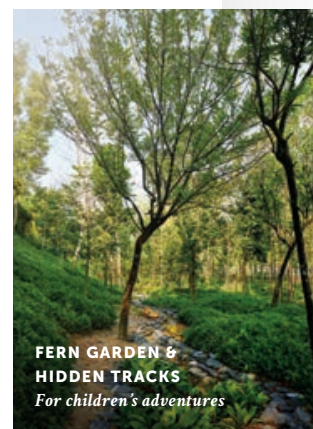
ELEVATED WALKWAY



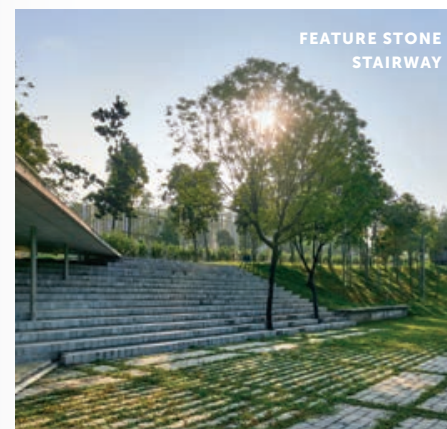
PICNIC SPOTS



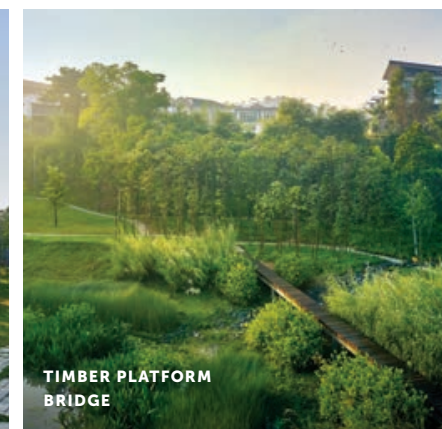
VIEWING DECK / YOGA PAVILION



FERN GARDEN & HIDDEN TRACKS  
*For children's adventures*



FEATURE STONE STAIRWAY



TIMBER PLATFORM BRIDGE



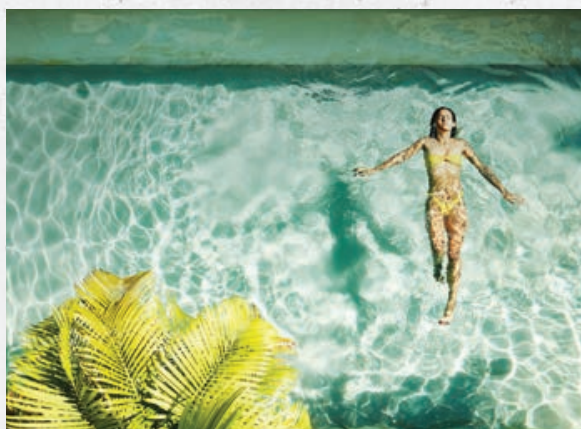
JOGGING TRACK

## THE FINS

*Beyond the layered landscape of Eucalyptus trees lies the clubhouse.*

The concrete fins of the clubhouse are a well-considered, yet aesthetically pleasing design element.

The fins filter the light within, allow cool winds to breeze through, as well as give a sense of openness to the space.



### THE CLUBHOUSE CONSISTS OF TWO DECKS AND OFFERS A VARIETY OF SOCIAL, LEISURE AND WORKOUT AREAS.

- Eucalyptus trees
- BBQ pit
- Edible herb garden
- Swimming pool
- Playground
- Wading pool for kids
- Town hall for functions, parties, meetings etc
- Yoga deck/cardio gym (upper deck)

## SITE PLAN





**DESIGNED FOR PRECIOUS MOMENTS WITH FAMILY AND FRIENDS.**

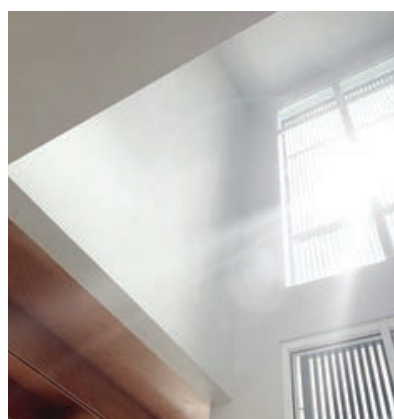
*Entertain indoor, outdoor or open it up into one large space.*

- Open-plan dry kitchen and dining area
- Flanked by the courtyard-style reception foyer
- Concealed wet kitchen with pantry space

**A PLACE TO MEET AND GREET THE FAMILY.**

The reception foyer connects the various spaces in the home, offering nooks for some alone time, or larger areas to socialise with the family.

- Double-volume entrance hall
- Open-plan design
- High ceilings



**YOUR HOME IS REALLY AN EXTENSION OF THE FOREST BEYOND.**

*And since forests have no walls, the open-plan design deliberately reflects this within the homes.*

A courtyard-style reception foyer with double-height windows merges the indoor and outdoor spaces seamlessly, creating a warm and welcoming ambiance.





MASTER BEDROOM

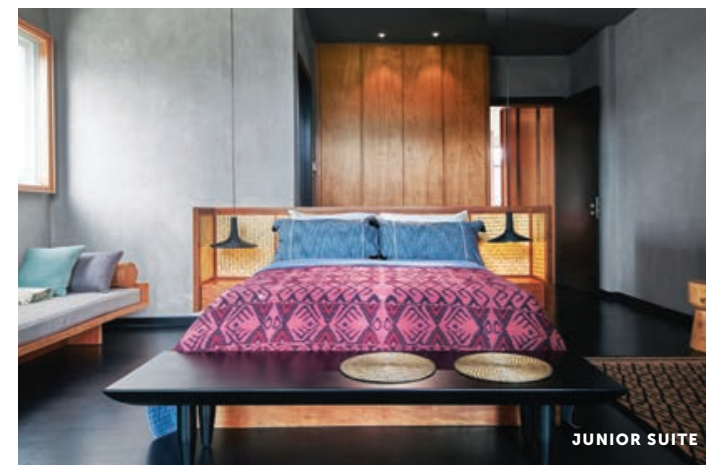


FAMILY AREA

**FALL ASLEEP TO THE SOUND OF SILENCE, AS NIGHT FALLS UPON THE FOREST.**

The master bedroom is a spacious 417-565 sq. ft. and comes with an en-suite, and space enough for a walk-in wardrobe.

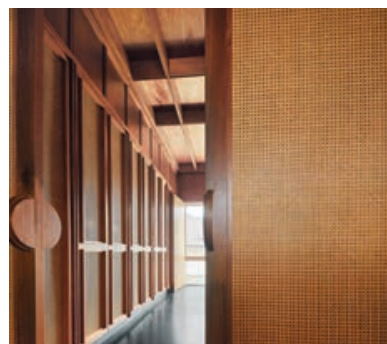
*Full-height windows and a generous balcony frame the picturesque garden below, filling the room with natural light and good ventilation.*



JUNIOR SUITE



DEDICATED STUDY / STUDIO

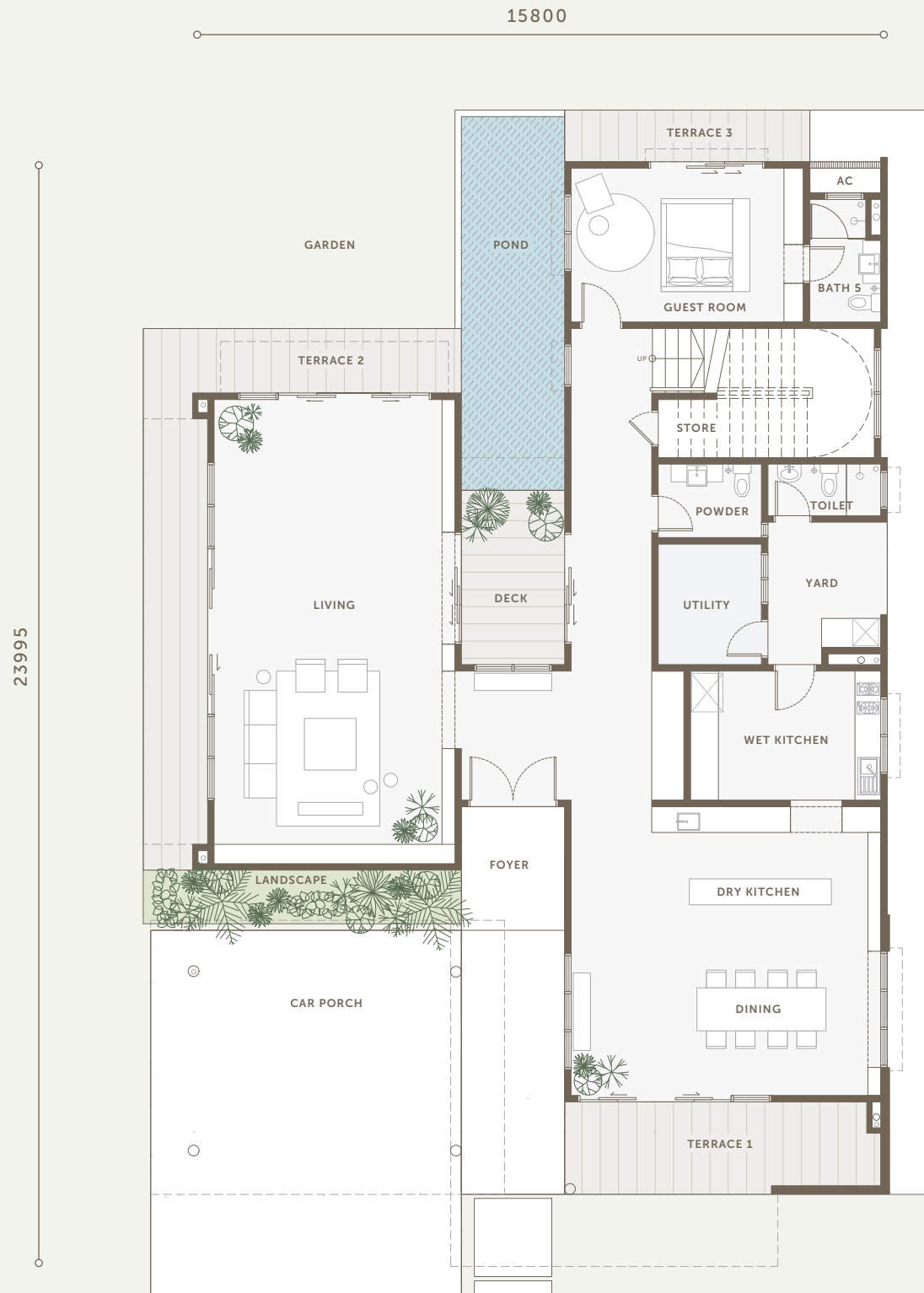


- 4 bedrooms, each with an en-suite on the first floor
- Guest room with an en-suite on the ground floor
- Powder room for guests to freshen up
- Maid's quarters with an en-suite, that's tucked away in the backyard
- Imported, quality bathroom fittings and sanitaryware
- Storage room under the staircase to keep things away (Type A)

# TYPE A2

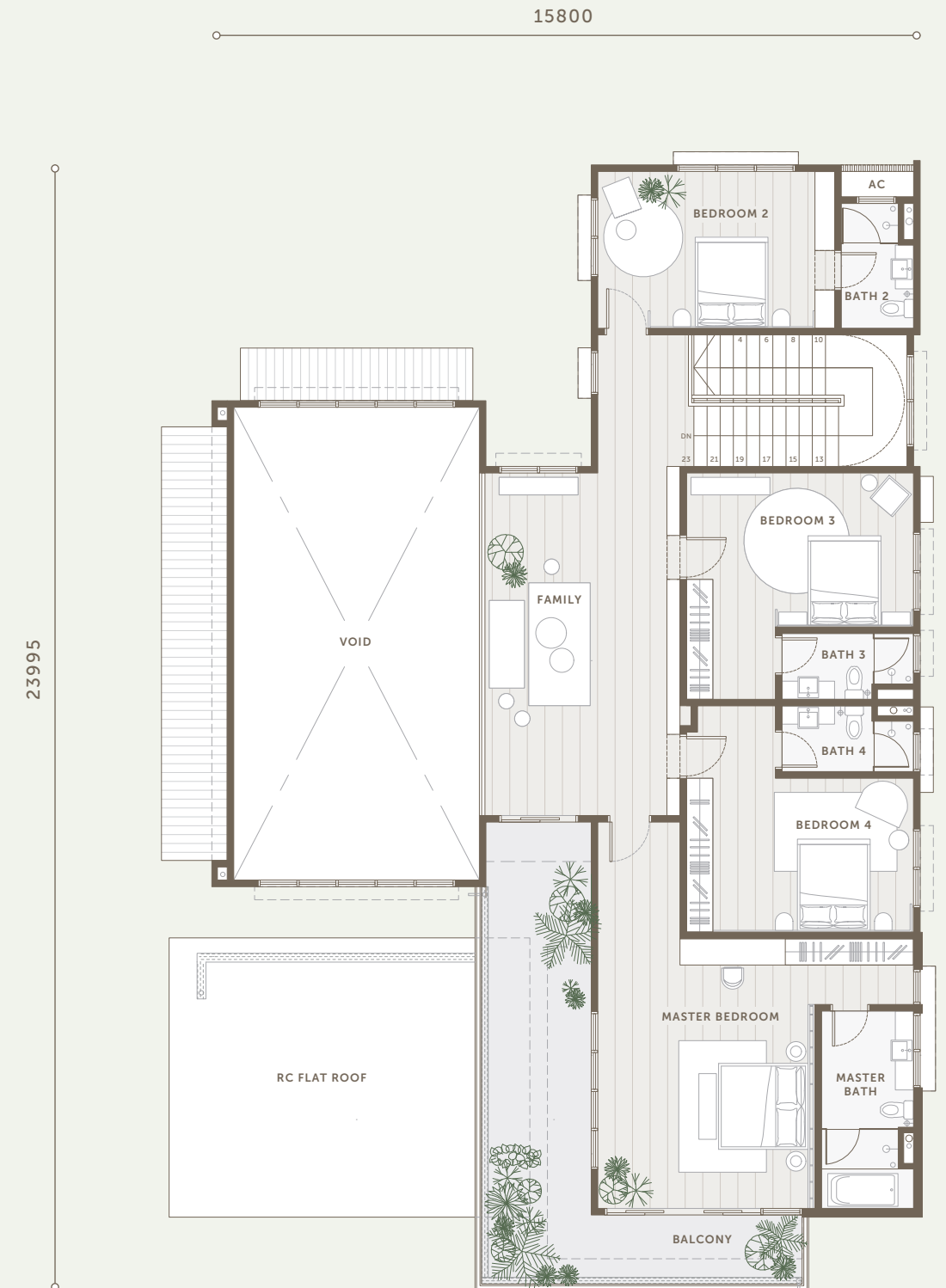
5+1 bed . 5+1 bath  
 built-up area  
 5,806 – 6,475 sq.ft.  
 land area  
 8,385 – 10,936 sq.ft.

GROUND FLOOR



\*Note: Type A (5+1 Bed . 4+1 Bath), Type A2 (5+1 Bed . 5+1 Bath)

FIRST FLOOR



Disclaimer: All renderings are artist's impressions only. All measurements are approximate. Prospective purchasers should view the property in person.

# TYPE B

5+1 bed . 5+1 bath

built-up area

5,825 – 5,971 sq. ft.

land area

8,084 – 12,680 sq. ft.

## GROUND FLOOR

17025



\*Note: Type B & B3 (5+1 Bed . 5+1 Bath), Type B2 (5+1 Bed . 6+1 Bath)

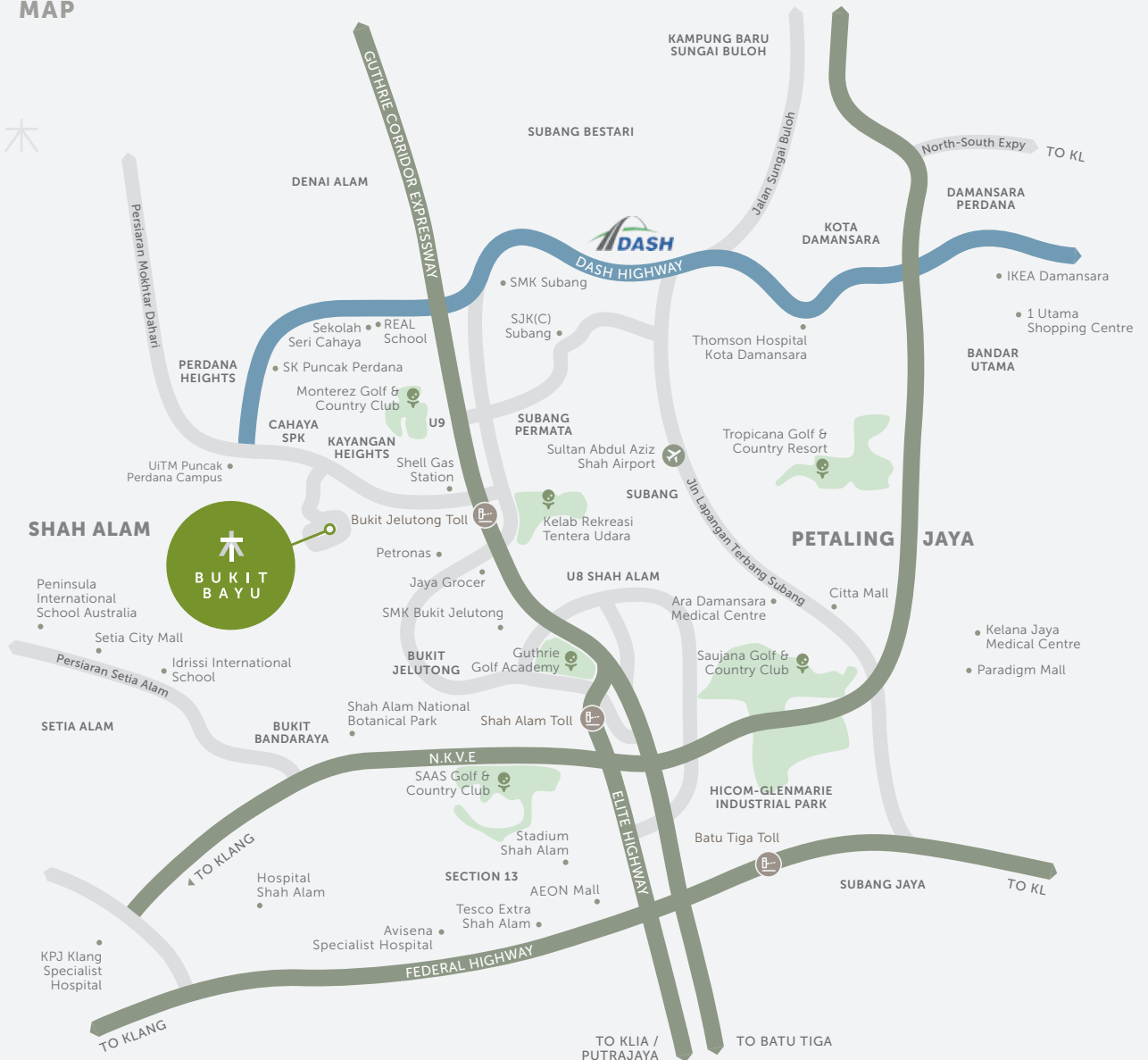
## FIRST FLOOR

17875

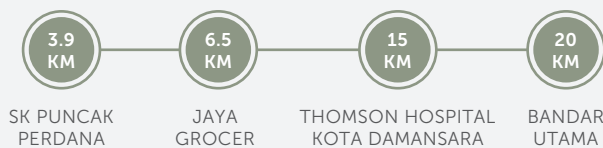




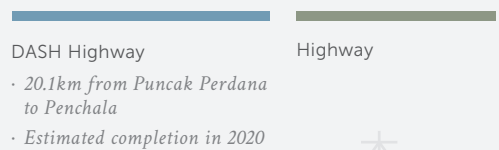
# LOCATION MAP



## DISTANCE



## LEGEND



### HEAD OFFICE:

Kimlun Land Sdn Bhd. Unit 401A, Level 4 Tower A, Uptown 5, No 5, Jalan SS21/39 Damansara Uptown, 47400 PJ, Selangor  
 TEL +603 7728 9289 FAX +603 7732 8489  
 WEB www.kimlunland.com

### SHOW GALLERY:

No. 72, Jalan Pulau Kapas U10/84 Bukit Bayu, Seksyen U10 40170 Shah Alam, Selangor  
 EML info@bukitbayu.com  
 WAZE bukit bayu

### CONTACT US:

TEL +603 7859 6533  
 H/P +6012 783 0991  
 +6012 783 7991  
 www.bukitbayu.com

ANOTHER PRESTIGIOUS PROJECT BY KIMLUN LAND



Note: All renderings are artist's impressions only.